

## Engine

Model	Mitsubishi L3E NA Diesel	
Rated net power (ISO 9249)	13.5 kW	18.1 hp
Gross power	14 kW	19 hp

- Meets U.S. EPA Interim Tier 4 emissions requirements.

## Engine Dimensions

Bore	76 mm	3.0 in
Stroke	70 mm	2.8 in
Displacement	0.95 L	58.1 in <sup>3</sup>

## Weights

	301.6C		301.8C	
Operating weight with canopy	1610 kg	3,549 lb	1680 kg	3,704 lb
Operating weight with cab	1720 kg	3,792 lb	1785 kg	3,936 lb

- Weight calculated with bucket, operator, full fuel tank and auxiliary lines.
- Weight depends on machine configuration.

## Travel System

Travel speed – high	4.5 km/h	2.8 mph
Travel speed – low	2 km/h	1.24 mph
Max traction force – high speed	7 kN	1,574 lbf
Max traction force – low speed	15 kN	3,372 lbf
Gradeability (max)	30°	

## Hydraulic System

Pump – gear (tandem)	19.8 L/min	5.23 gal/min
Pump – gear (single)	14.6 L/min	3.86 gal/min
Operating pressures – equipment	206 bar	2,988 psi
Operating pressure – travel	206 bar	2,988 psi
Operating pressure – swing	174 bar	2,524 psi
Auxiliary circuits – Primary (174 bar/2,524 psi)	34.4 L/min	9.09 gal/min
Auxiliary circuits – Secondary (174 bar/2,524 psi)	14.6 L/min	3.86 gal/min
Digging force – Stick, standard	9.9 kN	2,226 lbf
Digging force – Stick, long	8.8 kN	1,978 lbf
Digging force – Bucket	15.4 kN	3,462 lbf

## Swing System

Machine swing speed	10.5 rpm
Boom swing – left (without stop)	90°
Boom swing – left (with stop)	54°
Boom swing – right	50°

## Sound Levels

Canopy	83 dB(A)
Cab	83 dB(A)

- Operator sound pressure levels measured per ISO 6396 (dynamic).

## Electrical System

Type	12-volt system, 500 CCA, 35 amp/h maintenance free battery
------	--

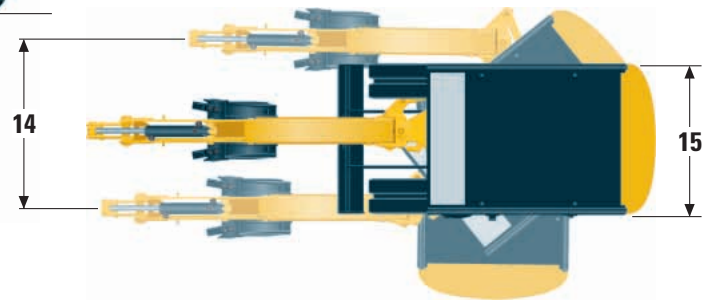
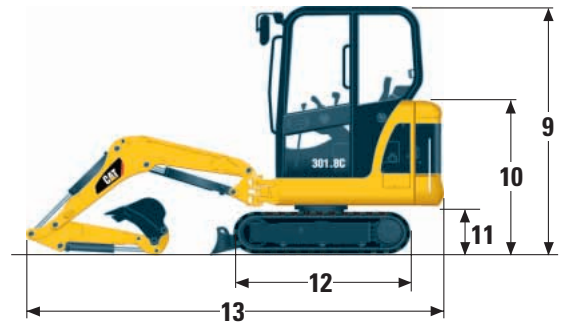
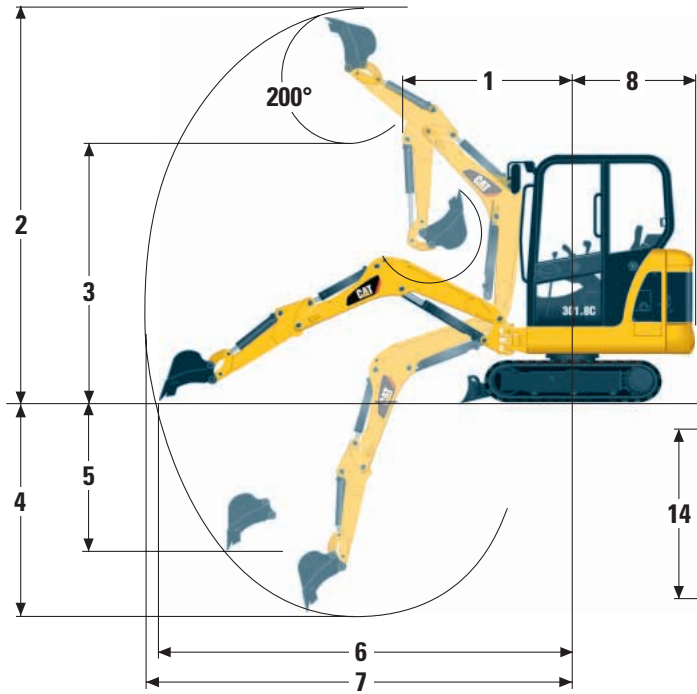
## Blade

	301.6C		301.8C	
Width – Standard	980 mm	38.6 in	980 mm	38.6 in
Width – Extended			1340 mm	52.8 in
Height	225 mm	8.9 in	255 mm	10.0 in
Dig depth	230 mm	9.1 in	250 mm	9.8 in
Lift height	180 mm	7.1 in	195 mm	7.7 in

## Service Refill Capacities

Cooling system	4 L	1.06 gal
Engine oil	4.1 L	1.08 gal
Fuel tank	22 L	5.8 gal
Hydraulic tank	24 L	6.3 gal
Hydraulic system	37 L	9.8 gal

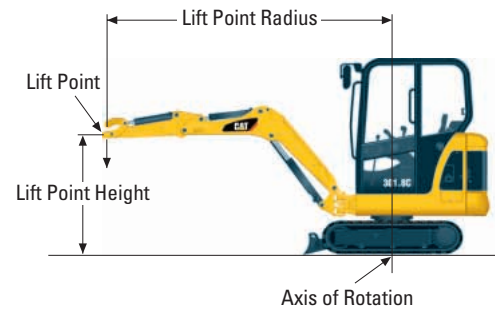
# Dimensions and Lift Capacities



	Standard Stick		Long Stick	
1	1550 mm	5'1"	1560 mm	5'1"
2	3350 mm	11'	3460 mm	11'4"
3	2360 mm	7'9"	2480 mm	8'2"
4	2080 mm	6'10"	2320 mm	7'7"
5	1620 mm	5'4"	1810 mm	5'11"
6	3610 mm	11'10"	3800 mm	12'6"
7	3700 mm	12'2"	3890 mm	12'9"
8	1090 mm	3'7"	1090 mm	3'7"
9	2190 mm	7'2"	2190 mm	7'2"
10	1365 mm	4'6"	1365 mm	4'6"
11	435 mm	1'5"	435 mm	1'5"
12	1575 mm	5'2"	1575 mm	5'2"
13	3695 mm	12'1"	3695 mm	12'1"
14	975 mm	3'2"	975 mm	3'2"
15	980 mm	3'3"	980 mm	3'3"

	Standard Undercarriage	301.8C Extended Undercarriage
Track and blade width	980 mm 3'3"	1340 mm 4'5"
Gauge width	750 mm 2'6"	1110 mm 3'8"
Shoe width	230 mm 9"	230 mm 9"

With tracks level on the ground.



Lift Capacities at Ground Level	Over Front		Over Side		Over Front		Over Side	
	2000 mm	6'7"	2000 mm	6'7"	3000 mm	9'10"	3000 mm	9'10"
Standard track								
Blade down	787 kg*	1,735 lb*	362 kg	798 lb	450 kg*	992 lb*	219 kg	483 lb
Blade up	515 kg	1,135 lb	329 kg	725 lb	300 kg	661 lb	201 kg	443 lb
Extended track (301.8 only)								
Blade down	782 kg*	1,724 lb*	580 kg	1,278 lb	445 kg*	981 lb*	334 kg	736 lb
Blade up	524 kg	1,155 lb	536 kg	1,181 lb	303 kg	668 lb	311 kg	686 lb

\* Limited by hydraulic capacity rather than tipping load.

The above loads are in compliance with SAE hydraulic excavator lift capacity rating standard SAE J1097 and do not exceed 87% of hydraulic lifting capacity or 75% of tipping capacity.

Excavator bucket weight is not included on this chart. Lifting capacities are for standard stick.

## Standard Equipment

*Standard equipment may vary. Consult your Caterpillar dealer for details.*

Alternator	Gauges or indicators for fuel level, engine coolant temperature, hour meter, engine oil pressure, air cleaner, alternator and glow plugs, service interval
Automatic engine idle	
Automatic swing parking brake	
Auxiliary hydraulic circuit valve, controls and on way (hammer) lines to the stick	Horn
Auxiliary line to quick coupler	Hydraulic oil cooler
Battery, maintenance-free	Linkage pin joints, low maintenance
Boom cylinder guard	Mobile phone holder and power socket
Canopy, FOPS ISO 10262 (Level I) and TOPS ISO 12117	Rubber track, 230 mm (9 in) wide
Coat hook	Seat, suspension, vinyl covered
Control pattern changer	Seatbelt, 50 mm (2 in)
Cup holder	Stick, standard
Dozer blade with float function	Storage box, lockable
Floor mat	Travel alarm
	Travel pedals
	Two-speed travel (dozer lever mounted)
	Work light, cab-mounted
	Wristrest, adjustable

## Optional Equipment

*Optional equipment may vary. Consult your Caterpillar dealer for details.*

Biodegradable hydraulic oil

Boom check valve

Cab – fully glazed with FOPS per ISO 10262 (Level I),

TOPS per ISO 12177, heater/defroster, interior light,  
windshield wiper and washer

Ecology drain valve for hydraulic tank

Fan and sun visor installation

Front screen guard for cab and canopy

Immobilizer system

Mechanical quick coupler

Mirrors for cab and canopy

Radio/CD player

Radio installation kit

Seat, suspension, fabric covered

Seat, high back suspension, fabric covered

Seatbelt, 75 mm (3 in)

Stick, long

Tool kit

Two way (auger) auxiliary lines to the stick

Work tools

# 301.6C/301.8C Mini Hydraulic Excavators

For more complete information on Cat products, dealer services,  
and industry solutions, visit us on the web at [www.cat.com](http://www.cat.com)

© 2007 Caterpillar  
All Rights Reserved  
Printed in U.S.A.

Materials and specifications are subject to change without notice.  
Featured machines in photos may include additional equipment.  
See your Caterpillar dealer for available options.

CAT, CATERPILLAR, SAFETY.CAT.COM, their respective logos and "Caterpillar Yellow"  
and the POWER EDGE trade dress, as well as corporate and product identity used  
herein, are trademarks of Caterpillar and may not be used without permission.

AEHQ5673-02 (12-07)

Replaces AEHQ5673-01

**CATERPILLAR<sup>®</sup>**